

J.H. Eales (Battye, J.S., *Cyclopedia of Western Australia*, Vol.1, 1912, p.631; RAIA c.1930s)

Joseph Herbert Eales (1864-1957) was born 19 October 1864 at Exmouth and educated at the Totnes Grammar School, both in Devon, England. Eales gained his initial architectural education by entering into articles at Exeter with Edward Hall Harbottle, ecclesiastical surveyor for the Diocese of Hereford and county surveyor for Devon. Having completed his indentures Eales continued with Harbottle for another two years, gaining valuable experience, particularly in church restoration. Subsequently Eales spent time studying and sketching on the Continent, before deciding to move to Australia in 1887.



Some of Eales' pen and ink sketches of 1887 ('Freehand Sketching', *Phi*, 1951, pp.9-11).

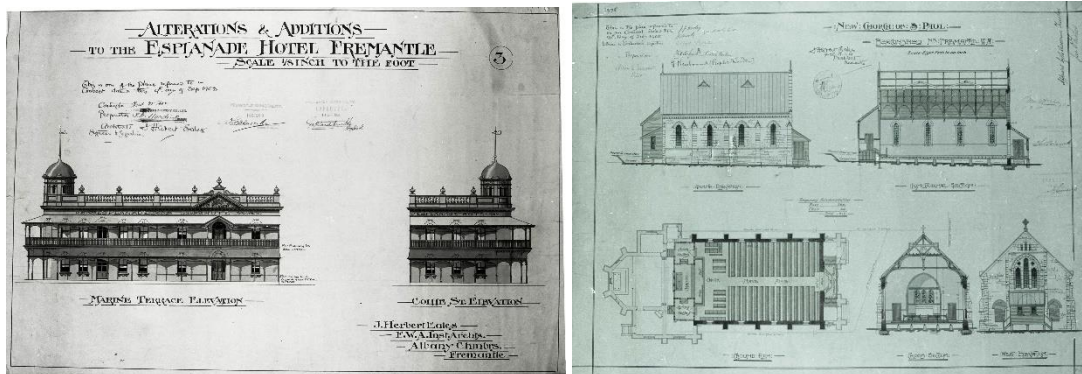
Eales first joined the Civil Service in Melbourne as a draughtsman, afterwards resigning to accept a post as chief draughtsman in a private practice. With the onset of the great economic down-turn in Melbourne during the early 1890s, he

moved to establish himself at Ballarat. But with ongoing economic malaise in the State of Victoria, Eales was attracted by the gold boom economic conditions of Western Australia. In 1897 he voyaged to Fremantle, and with Charles Lancelot Oldham subsequently won a competition for the design of Fremantle Markets. Eales practiced with success at the port for nine years, before moving to Perth. While Eales was responsible for numerous urban hotels and commercial buildings, in the early Twentieth Century he also produced designs for many homesteads, farm buildings and shearing-sheds in pastoral areas of the State.



In 1903 Eales designed A.E. Morgans' *Gledwyn* (formerly *Gracemere*) at 16 St George's Tce Perth, shown with the Lee-Steere's *Elderslie* at rear left (*Mirror*, 12 March 1909, p.24).

At Fremantle, the Esplanade Hotel was renovated and redesigned by Eales in 1903. Eales' plans reorganised the interior structure of the Esplanade, and made the exterior facade of the hotel more distinctive and ornate. Perhaps the most significant addition he made was the dome shaped corner turret, still one of the main features of the Esplanade Hotel today. Other Eales designs at Fremantle included Detmold's Building (with C.L. Oldham 1899, demolished 1970), the Terminus Hotel, the Catholic Girl's School and additions to the Federal Hotel.



Esplanade Hotel, Fremantle; and St Paul's Church Beaconsfield (Muhling Collection).



St Paul's Beaconsfield 1905 (Google 2012); St George's Carnarvon 1907 (HCWA pic113).

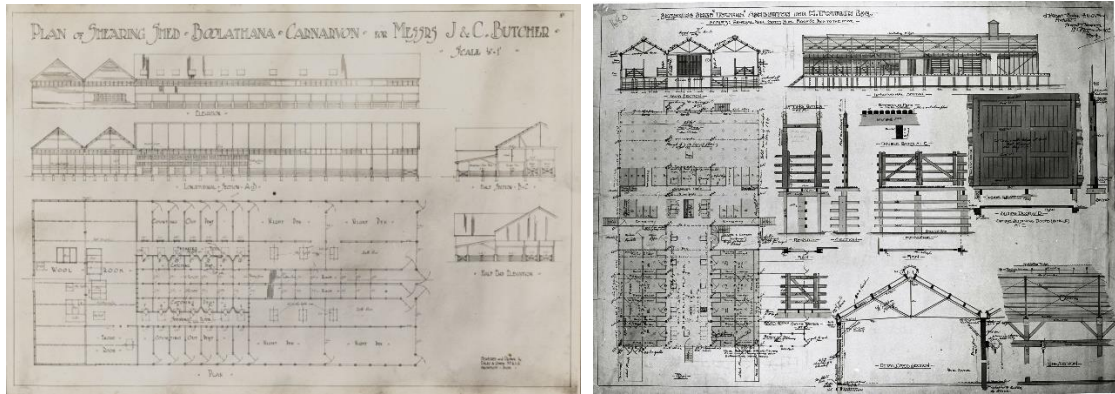


St Peter's Badgebup 1922 (lostkatanning.com); Broome War Memorial 1922(SLWA 085158PD).

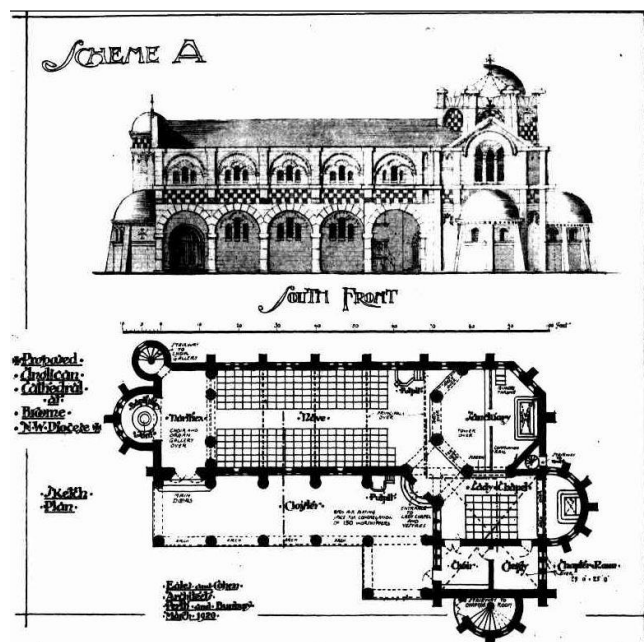


All Saints Collie 1915 (HCWA pic160); Garryowen, Vancouver Street, Albany (Google 2012).

Anglican church designs by Eales individually include St Paul's Beaconsfield in 1905, St George's Carnarvon in 1907, All Saints Collie in 1915, and St George's Bluff Point, Geraldton in 1935. At Vancouver Street, Albany, Garryowen is a substantial residence built in 1908 for merchant Herbert Robinson. Claimed to be the 'best all-round shearing shed in the North-West', Eales' design at Towera Station in the Ashburton was erected for Henry Twitchin in 1908, and is another illustration of his versatility.



Shearing shed at Towera Station for Henry Twitchin (Muhling Collection); shearing shed at Boolathana, Carnarvon for Messrs J. & C. Butcher (slwa_b5967587_1).



Cathedral design for North-West Diocese, Broome, not built (*Western Mail*, 15 April 1920, p.24).

His country hotels include the Katanning in 1905, and both the Esplanade and Freemasons in Albany around 1910. In 1913 Eales formed a successful partnership with Eustace Cohen in Perth, expanded in 1930 to Eales Cohen & Bennett, and from 1937 as Eales Cohen & Fitzhardinge. Eales was registered with the Architects Board of Western Australia (reg no 3) on 29 May 1922.

A Protestant and Freemason, none-the-less Eales enjoyed correspondence with Catholic priest-architect John Hawes, and as a gifted amateur musician Eales was at times organist at St Patrick's Basilica, Fremantle, and at St Mary's Cathedral, Perth - both Catholic churches. He also showed great skill with rifle shooting, at playing golf, and lawn bowls. Eales married Mabel Hannah Lilly in 1908. Active in professional affairs, he was President of the West Australian

Institute of Architects during 1917-1919, a member of the Architects Board of Western Australia 1922-1946 (chair 1939-1942), and made a Life Fellow of the Royal Australian Institute of Architects in 1946.



Eales in the early 1940s (*The Architect*, September 1942, p.10)

Mabel Eales died at Claremont in 1930, and J. Herbert Eales spent a great deal of his later years at The Weld Club in Perth, living to almost 93 years, passing away 25 September 1957.

References:

- 'Tenders', *The West Australian*, 7 March 1903, p.3 (additions to Gracemere for A.E. Morgans).
 'On the Terrace', *West Australian Mining, Building, and Engineering Journal*, 9 Nov 1907, p.19.
 'J. Herbert Eales' in Battye, J.S. (Ed), *Cyclopedia of Western Australia*, Vol.1, 1912, p.637.
 'Towera Station' in Battye, J.S. (Ed), *The history of the North West of Australia embracing Kimberley, Gascoyne and Murchison Districts*, V.K. Jones & Co, Perth, 1915, pp.250-251.
 'Pictures from the Pastoral North-West', *Western Mail*, 17 August 1917, p.24 (J.H. Eales' photos).
 'Proposed War Memorial Cathedral', *Western Mail*, 15 April 1920, p.24 (at Broome, not built).
 'A Broome Memorial', *Western Mail*, 2 June 1921, p.24 (war memorial in Donnybrook stone).
 'Real Estate', *The West Australian*, 8 September 1924, p.6 (architect of shearing sheds-quarters).
 'Pen Portraits', *Daily News*, 3 February 1930, p.4 (of J.H. Eales).
 'Over Eighty', *Western Mail*, 2 November 1944, p.3.
 'Obituary: The Late Mr J. Herbert Eales', *The Architect*, Vol.3, No.4, 1957, p.17.
 Kelly, Ian, 'Eales, Joseph', *Encyclopedia of Australian Architecture*, editors Philip Goad and Julie Willis, Cambridge University Press, Port Melbourne, 2012, p.220.

Contributing author: John Taylor

Heritage Committee review: 12 April 2012 Last updated: 14 January 2023

Citation details:

Taylor, Dr John J., 'Joseph Herbert Eales (1864-1957)', *Western Australian Architect Biographies*, <http://www.taylorarchitects.com.au/Biographies.html> accessed DATE.